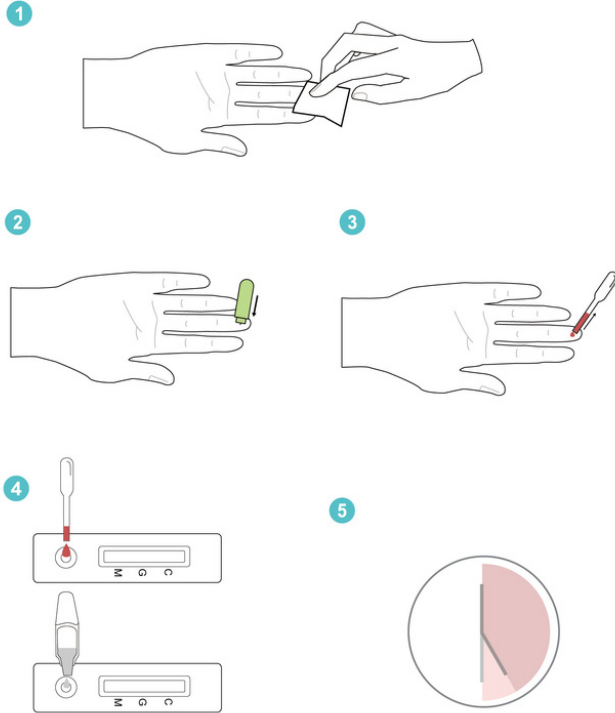
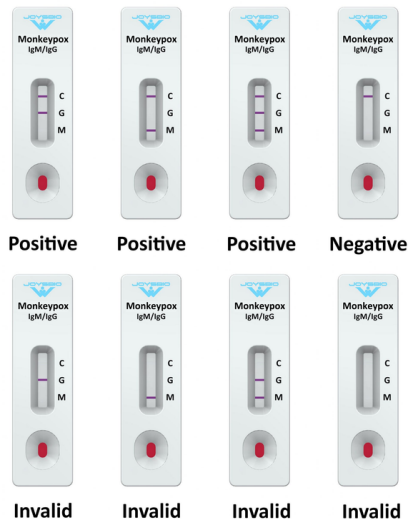


TEST PROCEDURE

Check Instructions for Use for complete procedure



Result Interpretation:



CONTACT US

JOYSBIO (Tianjin) Biotechnology CO., LTD.

Headquarters: Tianjin International Joint Academy of
Biotechnology & Medicine 9th floor, No.220,
Dongting Road, TEDA 300457 Tianjin China

Website: <https://en.joysbio.com/>
Email: bd@joysbio.com
Tel: +86-186-0545-0986 (ENGLISH)
+86-22-5851-5062 (中文)
WhatsApp: +86-186-0545-0986

ORDER INFORMATION

JOYSBIO Monkeypox Virus IgG/IgM Antibody Rapid
Test Kit (Colloidal Gold)
REF NUMBER:
G03721/G03722/G03723/G03724/G03725/G03726/G
03727/G03728
for 1/5/10/12/15/20/25/40 tests/box

© 2020 JOYSBIO (Tianjin) Biotechnology CO., LTD. All rights reserved.
All trademarks referenced are trademarks of JOYSBIO. Any photos
displayed are for illustrative purposes only.



Monkeypox IgG/IgM Antibody Rapid Test Kit (Colloidal Gold)

Rapid monkeypox virus antibody
detection with one drop of blood

JOYSBIO (Tianjin) Biotechnology CO., LTD.
Website: <https://en.joysbio.com/>



INTENDED USE

The Monkeypox IgM/IgG Antibody Rapid Test Kit is a rapid, lateral flow immunoassay intended for the qualitative detection of monkeypox virus IgM and IgG antibodies from whole blood, plasma, and serum specimens. This test is intended for use in individuals with or without symptoms or other epidemiological reasons to suspect a monkeypox infection, or to test if a person was infected by monkeypox in the past. Self-test by a layperson is subject to local legislations.

HIGHLIGHT

- CE-IVD certified product
- Rapid detection of monkeypox virus antibodies in less than 15 minutes
- No instrumentation required
- Cost-effective solution for large-scale screening

SPECIFICATION:

- **TEST TIME:** 15-20 MINUTES
- **STORAGE CONDITION:** 2°C-30°C
- **CE-IVD MARK**
- **SAMPLE TYPE:** Whole blood, plasma, serum
- **SHELF LIFE:** 24 months

CONTENTS:

- Test Device
- Buffer Bottle (200 µL/bottle)
- Dropper
- Alcohol Pad
- Lancet
- Instructions for Use



PACKING INFO

Package	# of boxes/test s per carton	Gross weight /volumetric weight (kg)
1 tests/box	528/528	8/21.5
5 tests/box	219/1095	16.5/21.5
20 tests/box	50/1000	15/21.5

Carton size: 410x510x610mm
Carton volumetric weight: 21.5kg